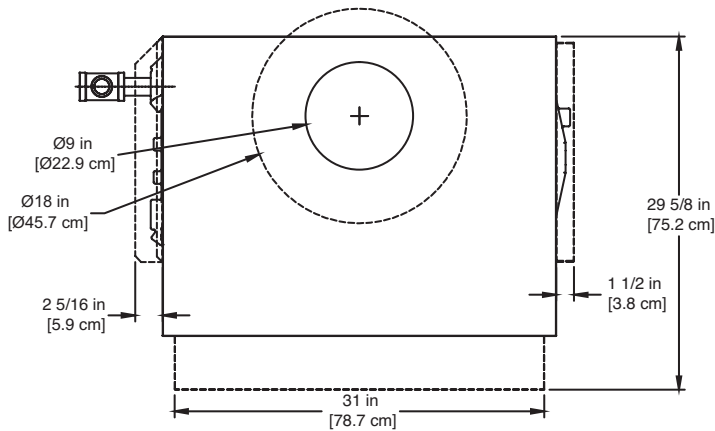


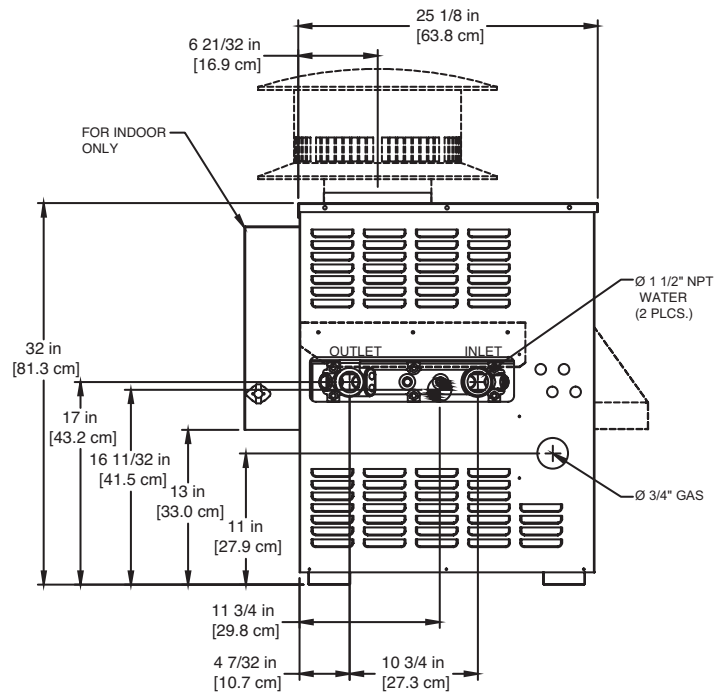
SPECTRUM 350

Category I Appliance

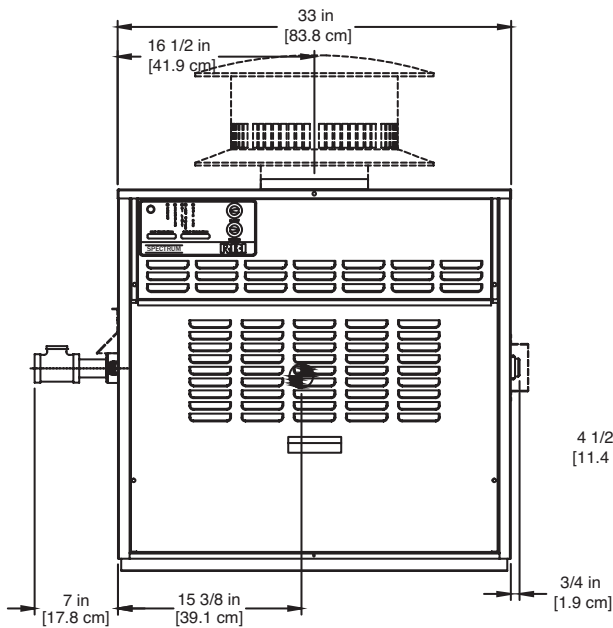
Must be vented into a negative pressure vent system.



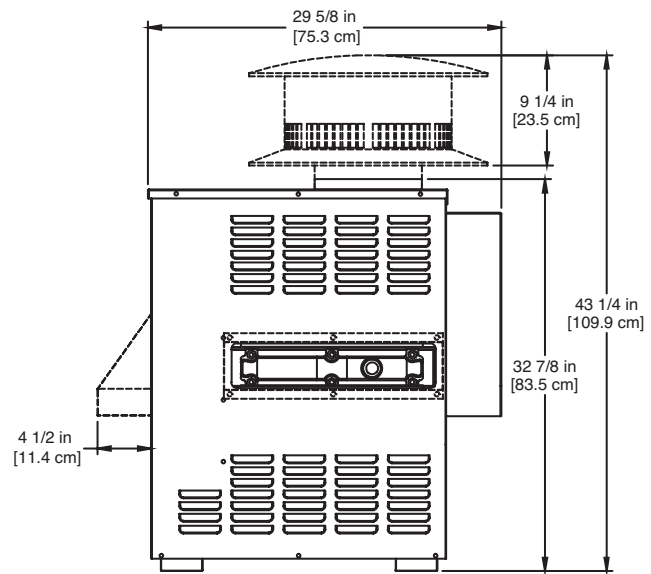
TOP



LEFT SIDE



FRONT



RIGHT SIDE

NOTE:
----- FOR OUTDOOR ONLY

RSUB-6-C

Notes:

1. Dimensions are approximate and should not be used to "rough-in" equipment.
2. Dimensions are subject to change without notice.

BOILER CERTIFIED RATINGS & CAPACITIES

| | | | |
|--------------------------------|-----------------------|-----------------------------------|--------------------|
| Fuel Type | Natural/Propane Gas | Boiler FLA | 1* |
| Input BTU/hr. | 350,000 / 103 kW | Min. Gas Pressure Required | 5" WC** |
| Output BTU/hr. | 285,600 / 84 kW | Max. Gas Pressure Allowed | 14" WC |
| Electrical Requirements | 120VAC / 1 ph / 60 hz | Operating Weight | 252 lbs. / 114 kg. |

BOILER / WATER HEATER TRIM & CONTROLS

| | | | |
|----------------------------------|--------------------------------|-------------------------------------|---------------------------|
| Gas Valve - INT | Honeywell VR8304M 3/4" | Ignition Control (SB On/Off) | Honeywell S9361A2085 |
| Gas Valve | Honeywell VR8304Q 3/4"- 2 Stg. | Ignition Control (SB 2 Stg.) | Honeywell S86IOM |
| Operating Control (SB/SW) | Honeywell - On/Off | Ignition Control (SW) | Honeywell S86IOM |
| Gas Valve | Honeywell VR8304Q 3/4"- 2 Stg. | Relief Valve - SW | 3/4" x 3/4" set @ 125 psi |
| High Limit (SB/SW) | Jumo | Relief Valve - SB | 3/4" x 3/4" set @ 30 psi |
| | | Flow Switch | TACO |

A.S.M.E.

| | | | |
|---------------------------------|----------------------------|--------------------|-----------------------|
| ASME Sect IV Htg Surface | 48.5 Sq. Ft. / 4.50 Sq. M. | Design Data | Max. 160 psig & 250°F |
| Water Volume | 1.4 gal / 5.38 Liters | | |

* Add circulator amps.

** For incoming gas pressures lower than 5" WC natural or 11" WC propane, consult factory.

BOILER TEMPERATURE RISE / PRESSURE DROP

| 10°F / 5.5°C | | | | 20°F / 11.1°C | | | | 30°F / 16.7°C | | | | |
|--------------|-----|---------------|-----|---------------|-----|---------------|-----|---------------|-----|---------------|-----|---------------|
| Flow Rate | | Pressure Drop | | Flow Rate | | Pressure Drop | | Flow Rate | | Pressure Drop | | |
| GPM | L/s | Ft | kPa | GPM | L/s | Ft | kPa | GPM | L/s | Ft | kPa | |
| 57.1 | 3.6 | 1.20 | 3.5 | 28.6 | 1.8 | 0.33 | 1.0 | 19.0 | 1.2 | 0.20 | 0.5 | 2 Pass |
| - | - | - | - | 28.6 | 1.8 | 2.39 | 7.0 | 19.0 | 1.2 | 1.10 | 3.3 | 4 Pass |

WATER HEATER HOURLY RECOVERY CAPACITY (GPH & LPH)

| | | | | | | | | | | | |
|------|------|------|------|------|------|-------|------|-------|------|-------|------|
| 40°F | 22°C | 60°F | 33°C | 80°F | 44°C | 100°F | 56°C | 120°F | 67°C | 140°F | 78°C |
| 840 | 3176 | 560 | 2118 | 420 | 1588 | 336 | 1271 | 280 | 1059 | 240 | 908 |

REP FIRM _____
SUBMITTED BY _____
JOB NAME _____
ARCHITECT _____
ENGINEER _____
CONTRACTOR _____
DATE _____

SPECTRUM 350

Category I Appliance

Must be vented into a negative pressure vent system.



A Division of Mestek, Inc.
 Westfield, MA 01085
 (413) 564-5515